



Qubic .TWS

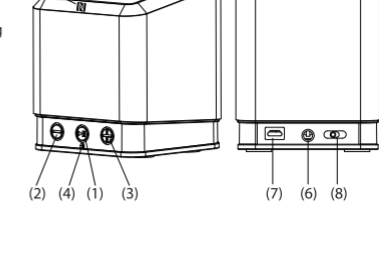
Quick Reference Guide

www.jabees.com

Qubic TWS is a Bluetooth® speakerphone which is compliant with Bluetooth® V4.0 based on CSR Platform.

Overview of Qubic TWS:

- (1). Play/Pause/MF Button
- (2). Volume down/Previous song
- (3). Volume up/Next song
- (4). LED/Microphone
- (5). NFC tag
- (6). 3.5mm Audio jack
- (7). MicroUSB charging jack
- (8). On /off switch



Introduction

Congratulations, and thank you for choosing Qubic TWS Bluetooth® Speakerphone. This manual will help you to operate the Qubic TWS, but you should first familiarize yourself with the Bluetooth® functionality of your mobile phone or other devices using the Bluetooth® Speakerphone Qubic TWS.

Safety Rules

- (1) Please follow the rules depicted in this manual closely to ensure your safety. Before using this Bluetooth® speakerphone, we would strongly encourage you to read through this user manual.
- (2) Be more wary of any edges, uneven surfaces, metal parts, accessories and its packaging so as to prevent any possible injury or damage.
- (3) Do not modify, repair or dismantle this Bluetooth® speakerphone, Doing so may result in fires, electric shocks, complete breakdown of this Bluetooth® speakerphone, etc. All of which, are not covered under warranty.
- (4) Do not use any diluents or volatile liquid to clean the Bluetooth® speakerphone.
- (5) Do not use the Bluetooth® speakerphone in a hazardous location.

Single package included for Qubic TWS



1x Qubic TWS



1x MicroUSB charging cable



1x 3.5mm audio cable



1x user manual

CHARGING THE BATTERY

1. Plug the USB charging cable into Qubic TWS.
2. Plug the other end of the USB charging cable into your computer or AC charger with USB port.
3. The red LED light is on when charging.
4. When the battery is fully charged, the red LED light turns off and then shows solid blue light.

Important

- For the first time use, please charge the Qubic TWS fully before using.

TURNING QUBIC TWS ON/OFF

To turn on:

Switch on the Qubic TWS when the device is off. The blue-red LED light turns on steady in 2 seconds and you can hear 4 quick beeps.

To turn off:

Simply switch off Qubic TWS, no LED light turns on and on beep.

PAIRING QUBIC TWS

You are required to manually pair Qubic TWS with your mobile phone or other Bluetooth devices once before using them.

1. Turn on Qubic TWS within 20 seconds, they will connect within 10 seconds and the host device (Left Channel) and vice one (Right Channel) will be assigned automatically with voice prompt.
2. Long press the MF button of Left Channel for 2 seconds, Qubic TWS will enter pairing mode.
3. Set your phone or other Bluetooth devices to discover "Qubic TWS" and follow the instruction.
4. Play music on your mobile phone, then the music will stream from Qubic TWS speakers wirelessly.

5. If your phone asks for passkey or PIN-code, confirm with 0000 (4 zeros.)

Note:

1. The host device and the vice one will be fixed after Qubic TWS finish the automatic allocation in the first pairing. The host device is Left channel.
2. When Qubic TWS is connected with mobile via Bluetooth, turn off the left channel, Qubic TWS will break up the connection with the mobile phone and stop working; while turn off right channel, the Left channel still connect with the mobile phone and can continue to work.

PAIRING SINGLE QUBIC TWS

1. Turn on the single Qubic TWS, and long press the MF button for 2 seconds, it will enter pairing mode.
2. Set your phone or other Bluetooth devices to discover "Qubic TWS" and follow the instruction.
3. If your phone asks for passkey or PIN-code, confirm with 0000 (4 zeros)

NFC Connection & Disconnection

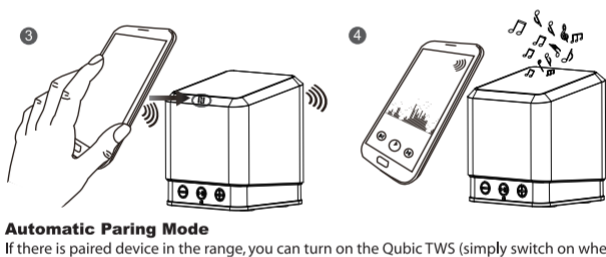
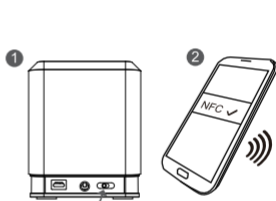
Qubic TWS is with in-built NFC technology for simple and fast connection or disconnection. If your mobile phone or other Bluetooth-enabled device supports NFC, you can do the fast connection and disconnection as below:

Connection:

1. Switch on Qubic TWS.
2. Turn on the NFC in your mobile phone.
3. Place your mobile phone's NFC reader near the NFC tag of Qubic TWS, the distance is required to be 2 CM or less, the closer the better.
4. Qubic TWS and your mobile phone is now connected.

Disconnection:

1. When the mobile phone and Qubic TWS are connected, place your mobile phone's NFC reader near the NFC tag of Qubic TWS, the distance is required to be 2cm or less. The closer the better.
2. Qubic TWS and your mobile phone is now disconnected.
3. Switch off the Qubic TWS.



Automatic Pairing Mode

If there is paired device in the range, you can turn on the Qubic TWS (simply switch on when the speakers are off) and it will go into pairing mode automatically.

Note:

1. If Qubic TWS is not in a pairing mode, your mobile phone or other Bluetooth devices will not find it. Please set Qubic TWS into pairing mode before making your mobile phone searched for Qubic TWS.

2. If no pairing is possible for a period of time (approximately 3 minutes), Qubic TWS will be out of pairing mode.
3. Qubic TWS will be automatically off when battery is lower than 2.7V.

MAKING CALLS

Once Qubic TWS is successfully paired and connected with your mobile phone, you can use left channel to make and receive calls. Left channel can be used with voice dialing if your mobile phone supports this feature. Please check your mobile phone's manual for more information.

1. Using voice dialing

Short press the MF-button of left channel for 2 times, and you will hear 1 beep, wait for a voice prompt and say the name of the person you want to call. (Some mobile phones may not support this feature.)

2. Using the phone keys to make calls

Enter and dial the number on the mobile phone as you normally do. Once the call has been set up, the sound will be transmitted to left channel automatically.

3. Redialing

Press and hold the MF-button of left channel for 2 seconds to redial the last number.

ANSWERING/ENDING/REJECTING CALLS

When left channel is turned on and there is an incoming call, you will hear a musical tone or beep (This is subject to the mobile phone.)

- Press the MF-button to answer the call.
- Press the MF-button to end the call.
- Press and hold the MF-button for 2 seconds to reject the call.

TRANSFERRING CALLS

To transfer a call to the mobile phone and back:

During both incoming call and outgoing call state, you can press and hold the MF-button of left channel for 2 seconds to transfer the call to the mobile phone, you can hear 1 beep.

If you want to transfer the call back to left channel, press and hold the MF-button of left channel for 2 seconds again, you can hear 1 beep. Some mobile phone may require more information.

ADJUST THE VOLUME

Press and hold the "VOL+" for volume up.

Press and hold the "VOL-" for volume down.

PLAY/PAUSE THE MUSIC

Press MF-button to play when the music is paused and press MF-button to pause when the music is playing.

NEXT SONG/PREVIOUS SONG

Short press the "VOL+" for next song

Short press the "VOL-" for previous song

WHEN THE BATTERY IS LOW

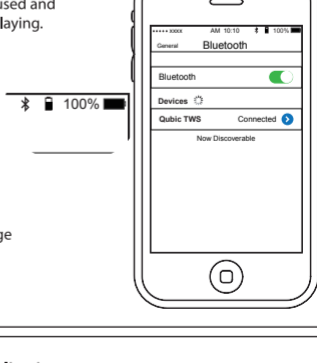
The red LED will wink when the battery is low.

At the same time, you can hear 4 quick beeps.

At this time, please charge your Qubic TWS.

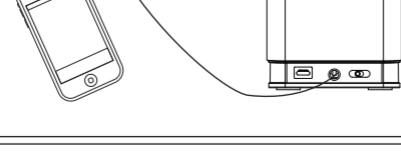
Important

- You must use the authorized charger to charge the Qubic TWS.
- You must charge the Qubic TWS if it has been not used for more than 12 months.



Left Channel/Right Channel supports audio line-in

Left Channel/Right Channel supports 3.5mm audio line-in with another device even when Qubic TWS is Bluetooth-connected with your mobile phone. When your mobile phone has been connected with Qubic TWS by Bluetooth, and you want to use your MP3 or other mobile phone to play music from Left Channel/Right Channel, then you can connect it with your MP3 or other mobile phone by the 3.5mm audio cable.



1. When Left Channel/Right Channel is connected by 3.5mm cable, it will play the music of 3.5mm cable preferentially. At this moment, the function keys will be available for the other channel which is not connection by 3.5mm audio cable.
2. The channel which is connected by 3.5mm audio cable for music should be turned on.

GUARANTEE

Jabees is a registered trademark of FreeTek International Co., Ltd. Other brands and product names are trademarks of their respective owners. Jabees warrants this product against all defects in material and workmanship for a period of **twelve (12) months** from the date of original purchase of the product. The conditions of this guarantee and the extent of responsibility of Jabees under this guarantee can be read in the Warranty Card.