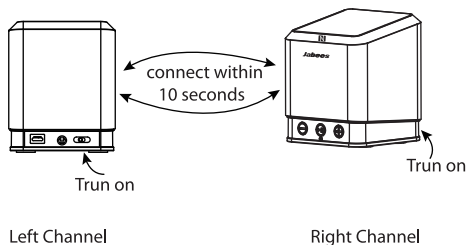
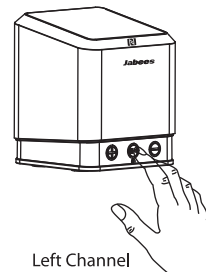


## How to use Qubic TWS (True Wireless Stereo) ?

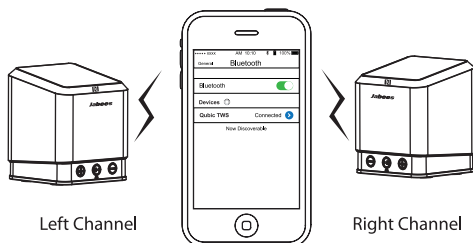
- 1 Turn on Qubic TWS within 20 seconds



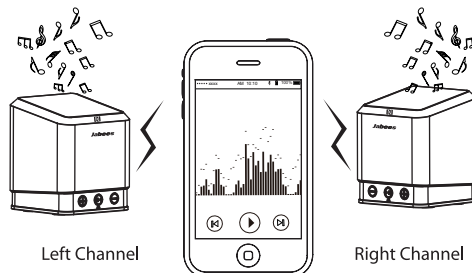
- 2 Long press the MF button of Left Channel for 2 seconds, Qubic TWS will enter pairing mode.



- 3 Set your phone or other Bluetooth devices to discover "Qubic TWS" and follow the instruction.

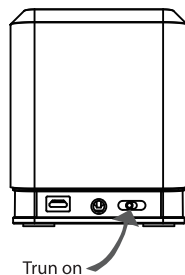


- 4 Play music on your mobile phone, then the music will stream from Qubic TWS speakers wirelessly.



## How to connect Qubic TWS by NFC?

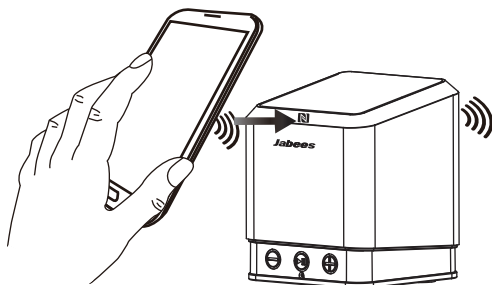
- 1 Switch on the Qubic TWS



- 2 Turn on the NFC in your phone



- 3 Place your mobile phone's NFC reader near the NFC tag of Qubic TWS.



- 4 Qubic TWS and your mobile phone is now connected.

